

# TD-9S

## CRAWLER DOZERS

EPA Tier 4F/EU Stage IIIB  
STANDARD, LT, LGP

### ENGINE

	TD-9S
Make and model	Cummins QSF3.8
Emissions standard	EPA Tier 4F/EU Stage IIIB
Displacement	3.8 l (229 in <sup>3</sup> )
Bore and stroke	107 x 115 mm (4.2 in. x 4.53 in)
Gross horsepower, SAE J1995	89 kW (120 hp)
Net horsepower, SAE J1349/ISO 9249	84 kW (113 hp)
Rated rpm	2200
Max. torque	448 Nm (360 ft-lb) @ 1600 rpm
Air cleaner	2-stage, dry type with service indicator

### COOLING

	TD-9S
Type	Variable-speed fan with viscous fan clutch
Engine coolant rating	-37 deg C (-34 deg F)

### OPERATOR STATION

	TD-9S
ROPS	ROPS (ISO 3471 - 2008)
FOPS	FOPS (ISO 3449 - 2005)

### HYDRAULICS

	TD-9S
Type	Open-center hydraulic system with fixed-displacement tandem gear pump
Pump displacement	69.6 l/min (18.4 gpm)
System relief pressure	20000 kPa (2900 psi)
Control	3-function direct-acting T-bar joystick
Cylinders, bore and stroke	
lift	89 x 449 mm (3.5" x 17.7")
angle	76 x 352 mm (3.0" x 13.9")
tilt	89 x 144 mm (3.5" x 5.7")

### ELECTRICAL

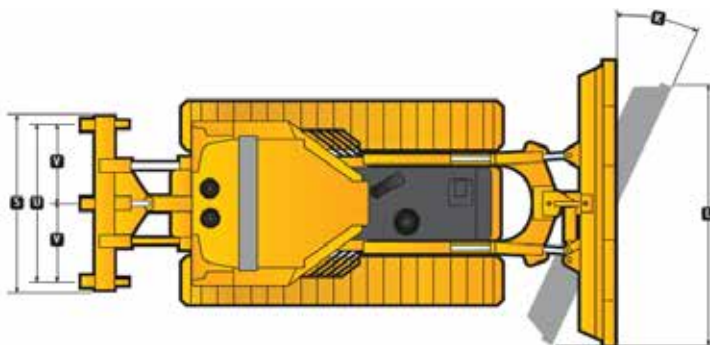
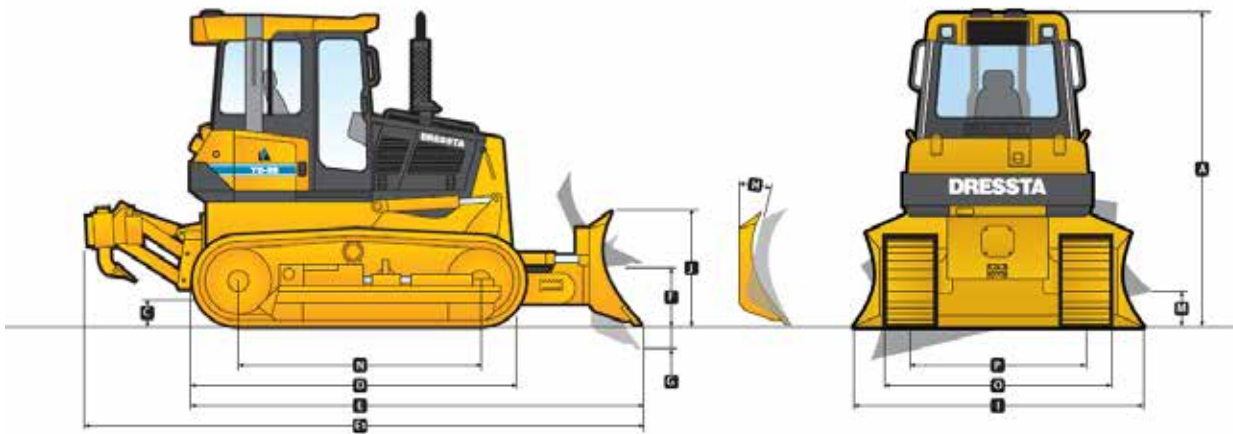
	TD-9S
Voltage	12 V
Battery Capacity	815 CCA
Reserve Capacity	170 min.
Alternator Rating	120 A
Lights	front- ROPS or cab (2), rear (1)

# MACHINE DIMENSIONS

## TD-9S LT

## TD-9S LGP

Blade Type	6-WAY	6-WAY
<b>A</b> Overall Height -Cab ROPS/FOPS	2.851 m (9 ft 5 in)	2.851 m (9 ft 5 in)
<b>B</b> Grouser height	53.6 mm (2.11 in)	53.6 mm (2.11 in)
<b>C</b> Ground clearance	426 mm (16.7 in)	426 mm (16.7 in)
<b>D</b> Overall length, base machine	3.22 m (10 ft 6.7 in)	3.22 m (10 ft 6.7 in)
<b>E</b> Length with Blade	4.38 m (14 ft 4.5 in)	4.38 m (14 ft 4.5 in)
<b>E1</b> Length with Blade and Ripper	5.5 m (18 ft 1 in)	5.5 m (18 ft 1 in)
<b>F</b> Blade Lift Height	0.85 m (33.5 in)	0.85 m (33.5 in)
<b>G</b> Blade Digging Depth	0.45 m (17.7 in)	0.45 m (17.7 in)
<b>H</b> Blade Cutting-Edge Angle, Adjustable	8 deg (52 to 60 deg)	8 deg (52 to 60 deg)
<b>I</b> Blade Width	2885 mm (9 ft 5.4 in)	3342 mm (10 ft 11.5 in)
<b>J</b> Blade Height	1020 mm (3 ft 4.2 in)	990 mm (3 ft 3 in)
SAE Capacity	2.2 m <sup>3</sup> (2.9 yd <sup>3</sup> )	2.4 m <sup>3</sup> (3.1 yd <sup>3</sup> )
<b>K</b> Blade Angle	25 deg	25 deg
<b>L</b> Overall Width with Blade Angled	2.64 m (8 ft 10 in)	3.06 m (10 ft 3 in)
<b>M</b> Blade Tilt	0.35 m (13.8 in)	0.4 m (15.7 in)
<b>N</b> Track Length on Ground	2432 mm (7 ft 11.7 in)	2432 mm (7 ft 11.7 in)
<b>O</b> Width Over Track	2097 mm (6 ft 10.6 in)	2500 mm (8 ft 2.4 in)
<b>P</b> Track Gauge	1640 mm (64.6 in)	1790 mm (70.5 in)



# RIPPER

## TD-9S LT / TD-9S LGP

### Heavy-duty parallelogram 3-shank ripper

Weight	850 kg (1,874 lb)
Weight of Shank	47 kg (103.6 lb)
Shank positions (vertical)	2
<b>R</b> Maximum Clearance Under Tip	460 mm (18.1 in)
<b>S</b> Overall Beam Width	1.81 m (5 ft 11 in)
<b>T</b> Slope Angle (full raise)	34 deg
<b>U</b> Ripping Width	1600 mm (5 ft 3 in)
<b>V</b> Spacing Center to Center	800 mm (31.5 in)
<b>X</b> Maximum Penetration	500 mm (19.7 in)

## OPERATING WEIGHTS

	TD-9S LT	TD-9S LGP
Base Weight (with 6-WAY blade, standard equipment, Cab ROPS/FOPS, full fuel tank, and 79-kg [175 lb] operator)	11000 kg (24251 lb)	11300 kg (24911 lb)
<b>Optional Components</b>		
Ripper w/3 shanks	850 kg (1874 lb)	850 kg (1874 lb)
<b>Track shoes</b>		
508 mm (20 in)	+ 74 kg (164 lb)	-
610 mm (24 in)	-	- 156 kg (343 lb)

## SERVICEABILITY

	TD-9 LT	TD-9 LGP
<b>Refill capacities</b>		
Fuel Tank	185 l (48 US gal)	185 l (48 US gal)
Cooling System	23 l (6 US gal)	23 l (6 US gal)
Engine Oil	11 l (2.7 US gal)	11 l (2.7 US gal)
Hydraulic Reservoir	116 l (30.6 US gal)	116 l (30.6 US gal)
Final Drive, Each Side	18.5 l (4.8 US gal)	18.5 l (4.8 US gal)
AdBlue (DEF)	20 l (5.3 US gal)	20 l (5.3 US gal)

## UNDERCARRIAGE

	TD-9S LT	TD-9S LGP
<b>Suspension</b>	Rigid type	Rigid type
<b>Tracks</b>	large deep-heat-treated, sealed, and lubricated track links and through-hardened, sealed, and lubricated rollers for maximum wear resistance	large deep-heat-treated, sealed, and lubricated track links and through-hardened, sealed, and lubricated rollers for maximum wear resistance
Track Gauge	1640 mm (64.6 in)	1790 mm (70.5 in)
Track Shoe Width	457 mm (18 in)	710 mm (28 in)
Chain	Sealed and lubricated	Sealed and lubricated
Shoes, Each Side	42	42
Track Rollers, Each Side	7	7
Track Length on Ground	2432 mm (95.7 in)	2432 mm (95.7 in)
Ground Contact Area	22374 cm <sup>2</sup> (3468 in <sup>2</sup> )	34534 cm <sup>2</sup> (5353 in <sup>2</sup> )
Ground Pressure	48 kPa (6.7 psi)	31 kPa (4.5 psi)
Track Pitch	165 mm (6.5 in)	165 mm (6.5 in)

Transmission	Automatic, dual-path, hydrostatic drive; automatically adjusts speed and power to match changing load conditions; each individually controlled track is powered by a variable-displacement piston pump and variable speed motor combination; ground-speed-selection on single-lever steering and direction control; independently selectable speed increments of 0.5 km/h ; decelerator/brake pedal controls ground speed to stop
Steering	Single-lever steering, speed, direction control, and counterrotation; full power turns and variable track speeds provide unlimited maneuverability and optimum control; hydrostatic steering eliminates steering clutches and brakes
Final Drives	Double-reduction final drives mounted independently of track frames and dozer push arms for isolation from shock loads
System Relief Pressure	45000 kPa (6526.7 psi)
Total Ratio	48 to 1
Travel Speeds Maximum	10.5 km/h (6.5 mph)
Drawbar Pull Maximum	181 kN (40690 lb)
<b>Brakes</b>	
Service	Hydrostatic (dynamic) braking stops the machine whenever direction-control lever is moved to neutral or the decelerator/brake is depressed to the detent
Parking	Exclusive spring-applied, hydraulically released park brake feature engages wet, multiple-disc brakes automatically whenever the engine stops, the operator depresses the decelerator pedal to the brake position, the unit is in neutral for 3 seconds (with detected motion), or the park-lock lever is in the park position; machine cannot be driven with brake applied, minimizing wearout or need for adjustment

# STANDARD EQUIPMENT TD-9S

---

## ENGINE & COOLING

Cummins engine 84 kW (113 hp) QSF3.8 EPA Tier 4F / EU Stage IIIB emission certified, turbocharged, high pressure injection (XPI), EGR, DRT, SCR, DEF after-treatment, electronic controls (ECM).

Water separator, fuel system

Air cleaner: Cummins Filtration Direct Flow, dry type, pre cleaner and service indicator.

Antifreeze, -34°F (-37°C)

Cooling module: includes radiator, oil cooler and charge air cooler (CAC); isolation mounted

Fan: viscosity clutch driven, variable speed

---

## DRIVETRAIN

Dual path Hydrostatic Drive system

Variable piston pump: tandem

Two hydraulic motors

Two-step final drives

Brakes: multi disc, spring applied/hydraulic release, on final drives

Steering: left hand single lever control T-handle joystick

---

## OPERATOR'S ENVIRONMENT

Cab with A/C, heater, pressurizer, defroster, AM/FM radio ready

Cab with 2 post ROPS, with sound suppression, 4 wipers w/washers, inside mirror, dome light, tinted safety glass and air recirculation system (approved according to ROPS – SAE J1040 and FOPS – SAE J231)

Brake/decelerator foot operated pedal

Seat: suspension type, fabric cover, with adjustable arm rests

Seat belt: (SAE J386) – 3 in wide, retractable

Sun visor for front cab window

Cup holder and lunch box

Tools compartment

---

## HYDRAULIC CONTROLS

Hydraulics, 4-spool valve, 4th section plugged

RH blade control

T-handle joystick, ready for ripper

---

## INSTRUMENTATION

Gauges: fuel level, engine coolant temperature, engine oil pressure, drive train system oil temperature, voltmeter, hour meter, tachometer, engine ECM failure warning lights and switches, gear, range, drive train and engine diagnostic display

Warning lights: air cleaner filter, drive train oil filters, hydraulic oil filters, coolant high temperature, drive train oil high temperature

Audible and visual warning system: low engine coolant level, low engine oil pressure

---

## ELECTRICAL

Alarm: back-up, 2 level sound

Alternator: 120 A

Dual batteries: 12 V, 960 CCA, cold start, maintenance free

Horn, electric

Lights for cab: 2 front, 2 rear, halogen type

Starting: 12 V

Starting aid: air grid heater

---

## GUARDS

Crankcase (hinged) with front pull hook: transmission, fan, radiator and sprocket rock and dirt deflector

Engine hood: sloped, partially perforated

Engine side doors: partially perforated

Final drive seal guard

Radiator guard doors: louvered, one-piece, bolted

---

## UNDERCARRIAGE (LT)

Track adjusters: hydraulic

Track chains: sealed and lubricated (LTS) with split master links (42 links)

Track frame covers

Track frame: 7 roller, 1,640 mm (65 in) gauge, rigid type, lifespan

lubricated rollers and idlers, front and rear chain guides

Track shoes: 457 mm (18 in), single grouser

---

## UNDERCARRIAGE (LGP)

Track adjusters: hydraulic

Track chains: sealed and lubricated (LTS) with split master links (42 links)

Track frame covers

Track frame: 7 roller, 1790 mm (70 in) gauge, rigid type, lifespan lubricated rollers and idlers, front and rear chain guides

Track shoes: 711 mm (28 in), single grouser

---

## OTHER STANDARD EQUIPMENT

Diagnostic centers for power train and equipment hydraulic pressures

Ecological drains for engine oil, radiator coolant and hydraulic oil

Manuals, parts and operator's filters, with 'spin-on' elements, engine oil, power train, retrieval hitch

---

# OPTIONAL EQUIPMENT TD-9S

## BLADE EQUIPMENT

**Angle (6-way)**, 2.2 m<sup>3</sup> (2.9 yd<sup>3</sup>), inside arm with hydraulic tilt and angle blade width – 2,885 mm (113 in.)

**Angle (6-way)**, 2.4 m<sup>3</sup> (3.1 yd<sup>3</sup>), inside arm with hydraulic tilt and angle blade width – 3,342 mm (132 in.)

## REAR MOUNTED EQUIPMENT

Ripper, multi-shank beam, with three shanks, includes deduct for standard retrieval hitch

## TRACK SHOES

508 mm (20 in) shoes, single grouser

660 mm (26 in) shoes, single grouser

## OPERATOR'S ENVIRONMENT

Heater/pressurizer/defroster cab without air conditioner (A/C)

For use with cab

- AM/FM CD radio
- Exterior mirrors (2 pcs)
- Sun visors for side door windows (2pcs)
- Additional adjustable working lights (2 pcs), ROPS mounted
- Cab lights, LED

Canopy ROPS/FOPS

Includes deduction for standard cab and air conditioner. Includes vinyl seat and instrument panel guard.

ROPS structure for use with sweeps

Includes deduction for standard cab and air conditioner. Includes vinyl seat and instrument panel guard.

## SCREENS

Sweeps, forestry, front and rear, for standard cab with ROPS

Sweeps, forestry, front and rear, for open ROPS machine (must order ROPS structure)

Screen, rear (required for winch application) for use with sweeps

Screens for cab windows, for standard cab with ROPS (bolted)

Screening package, for open ROPS machine, includes front and rear sweeps

Includes front, side doors and rear screen (must order ROPS Structure)

## GUARDS

Track roller guard, bolts to track guides

## ADDITIONAL OPTIONS

1,000 h maintenance package (filters)

1,500 h maintenance package (filters)

2,000 h maintenance package (filters)

## EXPORT PACKING

Export packing, drive-on/drive-off machine on the trailer

Export packing, containerized unit

## SFR

Trimble Ready and Trimble Full options available

Trimble® GCS900 Grade Control Systems are available through

Trimble® and Dressta dealers

Blade shaker

At Dressta we take pride in innovating to help our customers to achieve more in the jobs they do.

Our dedicated team of application engineers can customize designs, modify standard equipment and adapt attachments for peak performance in specific application tasks, improving productivity and bottom line results.

**Do you have a Special Feature Request? See how Dressta can help you achieve more in the jobs you do.**

Specifications may change from time to time and this brochure may not reflect the latest specifications. Photographs in this brochure may not reflect market configuration. Please consult your dealer to confirm specifications and configurations.



Dressta encourages safe worksites.

Please consult operator's manual before use of any Dressta equipment.



info@dressta.com

www.dressta.com

DR-SP-TD9S-T3/T4F-A4-06062017-ENG